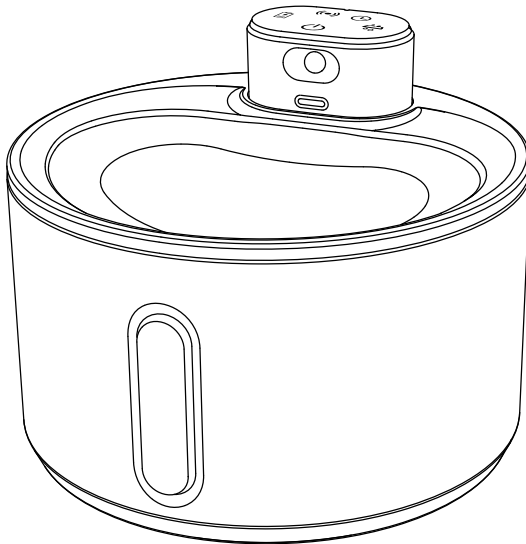


USER MANUAL

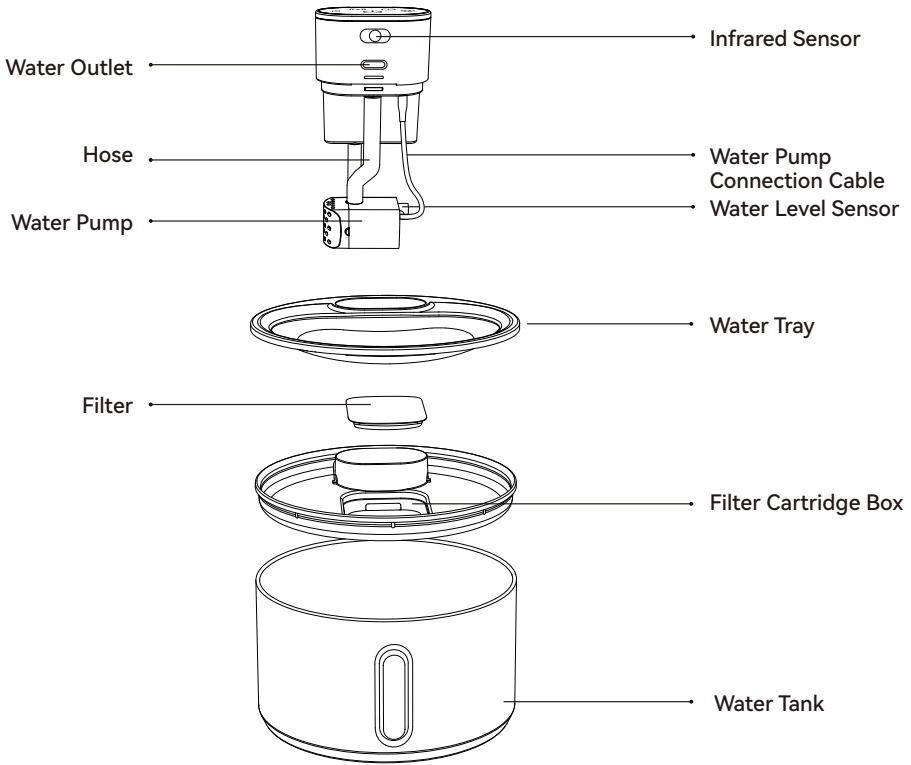
PET FOUNTAIN



Detailed product instructions and video tutorials, please visit the following website or scan the QR code.



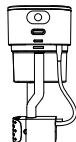
www.apetdola.com/collections/user-manual



Package Contents



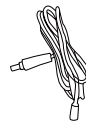
Main Machine *1



Main Control
Module + Pump *1



Filter *1



Type-C cable *1



User Manual *1

⚠ Caution

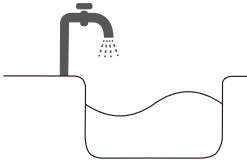
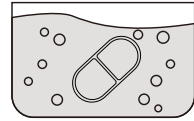
- Use this product in accordance with the installation and operation instructions.
- Please place the product on a stable surface to prevent falling.
- Please keep it away from fire and sunlight all year round.
- To prevent liquid from dripping, please keep the product away from other electrical appliances and electric plugs.
- Please do not scratch the surface of the product or the inside of the product with sharp objects.
- Please use the product in a normal pressure environment above 5°C.
- The main control module must not be put into the dishwasher.
- Please do not rinse the main control module with water. This may cause the product to malfunction.
- If you have not used the machine for more than 30 days, replace and reset the cartridge before use.
- When going on vacation, be sure to check the remaining water level and battery level.



Settings

1. Before installation, soak the filter in water at 5~50 °C for about 5 minutes (Remove the floating carbon created by the activated carbon in the transportation process).

Note: The filter must not be contaminated with oil.

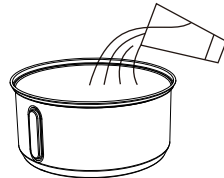


2. Rinse the water tray and water tank with clean water.

Note: The main control module cannot be rinsed with water, just wipe with a damp cloth.

3. Pour clean and hygienic water into the tank, please add to the highest water level line.

※ Water temperature requirement: 5-50°C.

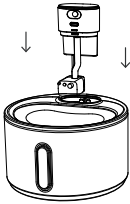


4. Put the filter tray into the water tank.



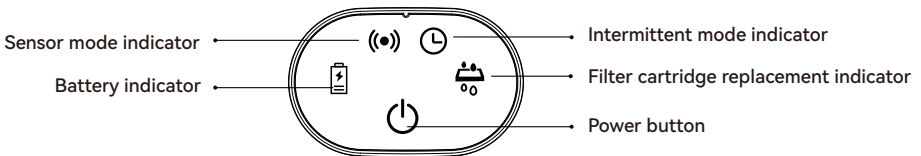
5. Put the filter in the filter tray.

6. Put the stainless steel drinking tray above the filter tray.



7. Insert the main control module into the water dispenser recess.

How To Use



How to use the Power key

One key to switch between 3 working modes.

① Wireless Use

Press to enter sensor mode → press again to enter intermittent mode → press again to turn off.

② Wired Mode

Press to enter continuous mode, Press again to enter sensor mode , Press again to enter intermittent mode , press again to turn off.

Icon Description

CHARGING INDICATOR LIGHT

Green flashing indicates charging in progress, and the green light stays on when fully charged. Red light breathing indicates low battery, and red light staying on indicates that the battery is about to run out.

INDUCTION WATER DISPENSING MODE

After entering the induction water dispensing mode, the light lights up every 8 seconds, and when the pet approaches, water is automatically dispensed for 8 seconds.

TIMED WATER DISPENSING MODE

In Timed Watering Mode, the machine cycles through dispensing water for 15 seconds and then pausing for 10 minutes, repeating automatically. The timed light lights up every 8 seconds.

FILTER REPLACEMENT REMINDER

When the filter light stays on, it indicates that the filter can be replaced → can be replaced. After replacing the filter, long press the power button for 5 seconds; the filter light will flash 3 times and then turn off, indicating a successful reset.

Water Level Window Light Notification

This product has a light notification function.

Blue Light - the product works normally.

Red Light - the water level in the tank is too low, the product will stop working. For your safety, please add the water in time.

How to Fill Water

Unplug the power supply and pour clean hygienic water into the water tank. The amount of water should be limited to the specified range (above the lowest water level line and below the highest water level line).

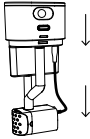
※It is recommended to change water at least once every 5-7 days.

How to Clean

1. Unplug the power supply.
2. Remove the drinking basin, water tank, and other parts, then rinse them with clean water.
※The main control module cannot be rinsed with water, but can be wiped with a damp cloth.
3. Pour clean water into the water tank and reassemble for use.
※It is recommended to fully clean the product at least once every 7 days.

How To Clean Water Pump

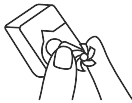
1. Take out the main control part and separate the pump from control part.



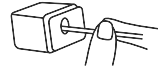
2. Open the pump shell.



3. Clip the impeller out of the pump with tweezers.



4. Use a small brush to clean the inside of the pump and the impeller.



5. After cleaning, please check whether the water machine power hole slot is rinsed with water, please wipe clean before powering on.

About Filter Replacement

We recommend changing the filter at least once a week. For the health of your pet, please replace the cartridge according to the actual usage .

1. Please purchase the original APETDOLA water filter cartridge.
2. Soak the filter cartridge in water for about 5 minutes before use.

Note: If the water flow becomes significantly slower or weaker, the filter cartridge may be clogged with dirt or damaged. Please replace the filter cartridge and clean the cartridge box

Product Spec

Product Name : Pet Water Fountain

Rated Voltage : 5V/1A

Product Model : FS40 PRO

Product Size : 22.0 * 22.0 * 16.5 cm

Product Weight : 0.83KG

Product Material : SUS304, ABS

Water Storage : 140mL

Product Capacity : 135fl.oz / 4L

Battery Capacity : 5000mAh

Battery Charging time : 6 hours

Troubleshooting

FAULT PHENOMENON	FAULT ANALYSIS	FAULT RESOLUTION
Press the power button,the function light does not turn on	<ol style="list-style-type: none"> 1. Insufficient battery power 2. Insufficient adapter 3. Type-C cable is not voltage-properly connected 	<ol style="list-style-type: none"> 1. Use a qualified adapter 2. Connect the Type-C cable properly for charging
Battery indicator in breathing mode/steady on	<ol style="list-style-type: none"> 1. Low battery 2. Unzureichende Adapterspannung 	<ol style="list-style-type: none"> 1. Charge the battery 2. Replace the adapter
Sufficient battery, normal function mode, pump red light stays on/red and blue alternately flashing,no water output	<ol style="list-style-type: none"> 1. Insufficient water in the storage tank 2. Pump or filter screen clogged 3. Pump damaged 	<ol style="list-style-type: none"> 1. Add sufficient clean water 2. Clean the filter screen and descale the pump 3. Replace the pump
Normal function mode,pump blue light stays on,no water output	<ol style="list-style-type: none"> 1. Pump or filter screen clogged 2. Pump detached, not installed on the main unit 3. Pump damaged 	<ol style="list-style-type: none"> 1. Clean the filter screen and descale the pump 2. Install the pump on the main unit with a silicone tube 3. Replace the pump
Reduced water output	<ol style="list-style-type: none"> 1. Pump or filter screen clogged 2. Insufficient battery power 3. Insufficient adapter voltage 	<ol style="list-style-type: none"> 1. Clean the filter screen and descale the pump 2. Charge the battery 3. Replace the adapter

FRIENDLY REMINDER: IF THE ABOVE CANNOT BE RESOLVED, PLEASE CONTACT US.

Customer Support

Thank you very much for purchasing APETDOLA products. In the process of using the products, if you have any questions about the products, please contact us, and we will provide you with thoughtful customer support.

How to contact us?

support@apetdola.com

Warranty Information

The product warranty period is 12 months from the date of purchase. Within one year after purchase, if the product fails to work properly due to its own problems, APETDOLA will provide you with replacement or free maintenance services.

Under the following circumstances, we will not provide repair service, whether not within the warranty period it.

- a. Products not purchased directly from APETDOLA sales channels (such as personal sales, auctions, etc.)
- b. The customer opens the product or attempts to modify the product;

Note: Regulations are subject to change without notice. APETDOLA reserves the right to renew the warranty when required. All repairs and requirements will be handled according to the latest warranty.